

Stanje negozdnih habitatnih tipov na vzhodnem delu Goričkega v letih 2010–2012

State of non-forest habitat types
in eastern part of Goričko in years 2010–2012

Branka Trčak

Center za kartografijo favne in flore

Monošter, 20. 9. 2012



Goričko Nature Park area



- NE part of Slovenia, 460 km²
- border with Hungary and Austria, north of Pomurje plain
- hilly landscape, average altitude 275 m
- highest peak (Sotinski breg) 419 m
- population density: 47 persons per km² (2001), 1/2 of Slovenian average
- precipitation: driest part of Slovenia, down to 800 mm (dry years only 600 mm)

State of non-forest habitat types in eastern part of Goričko in years 2010–2012



Habitat type mapping

- mapping of Goričko in 2002–2003 (Kaligarič et al. 2004)
- 2010–2012: E part of Goričko
- Aim: Guidelines for the management plan

Habitat type

- characteristic community of plants and animals closely linked with other environmental factors (light, warmth, humidity, light, soil type and structure)
- clearly separable from neighbouring habitat types
- some examples: montane beech forest, riparian willow formation, common reed bed, high-stem orchard, hay meadow, stream.

41.111 – Medio-European colline woodrush beech forests



37.311 Calcicline purple moorgrass meadows



82.11 - Field crops



83.151 – Northern fruit orchards



83.22 – Low-stem orchards



Methodology

- Tipology: HTS 2004, new version (2012) in preparation
 - combinations of habitat types (hybrids)
 - state of overgrowing
 - state of preservation (-, +, certain combinations)
-
- invasive species
 - streams types
 - small plots (important for some HTs)

field work → digitization → nature conservation
evaluation → analysis → Guidelines

State of non-forest habitat types in eastern part of Goričko in years 2010–2012



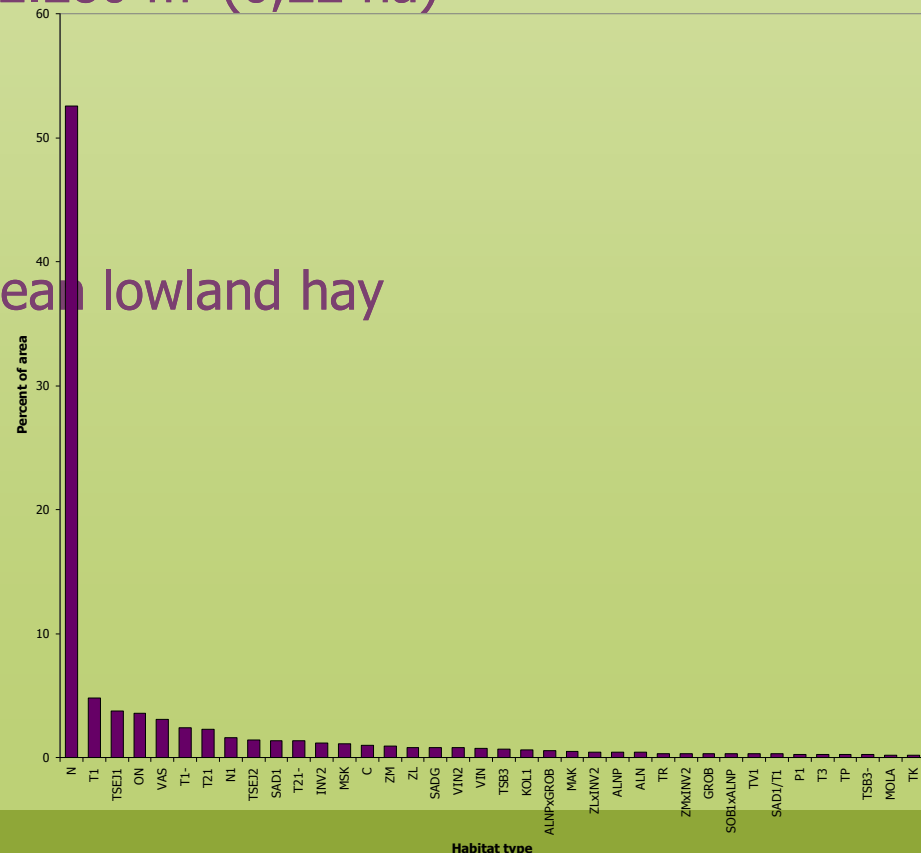
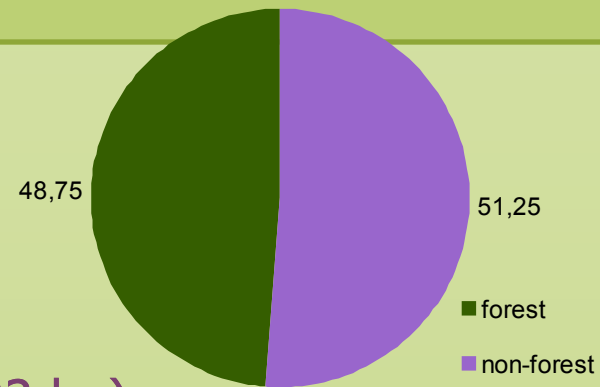
100 0 100 Meters

State of non-forest habitat types in eastern part of Goričko in years 2010–2012

Abbrev.	Physis	Habitat type	FFH	Decree HT	Bern	NCE
TN	35.11	Mezofilna do kserofilna volkovja pod gozdno mejo	6230*	3	B	5
TVE	37.2	Mokrotni mezotrofni in evtrofni travniki ali pašniki		3	B	4
TV1	37.21	Mezotrofni mokrotni travniki		3	B	5
DES	37.26	Vlažni travniki z rušnato masnico		3	B	4
TVM	37.3	Oligotrofni mokrotni travniki		3	B	4
MOL	37.311	Mokrotni travniki z modro stožko	6410	3	B	5
MOLA	37.313	Mezofilni do vlažni travniki s trstikasto stožko	6410	3	B	5
T1	38.221	Srednjeevropski kseromezofilni nižinski travniki na razmeroma suhih tleh in nagnjenih legah s prevladujočo visoko pahovko	6510	3		4
T2	38.222	Srednjeevropski higromezofilni nižinski travniki na srednje vlažnih tleh s prevladujočo visoko pahovko	6510	3		4

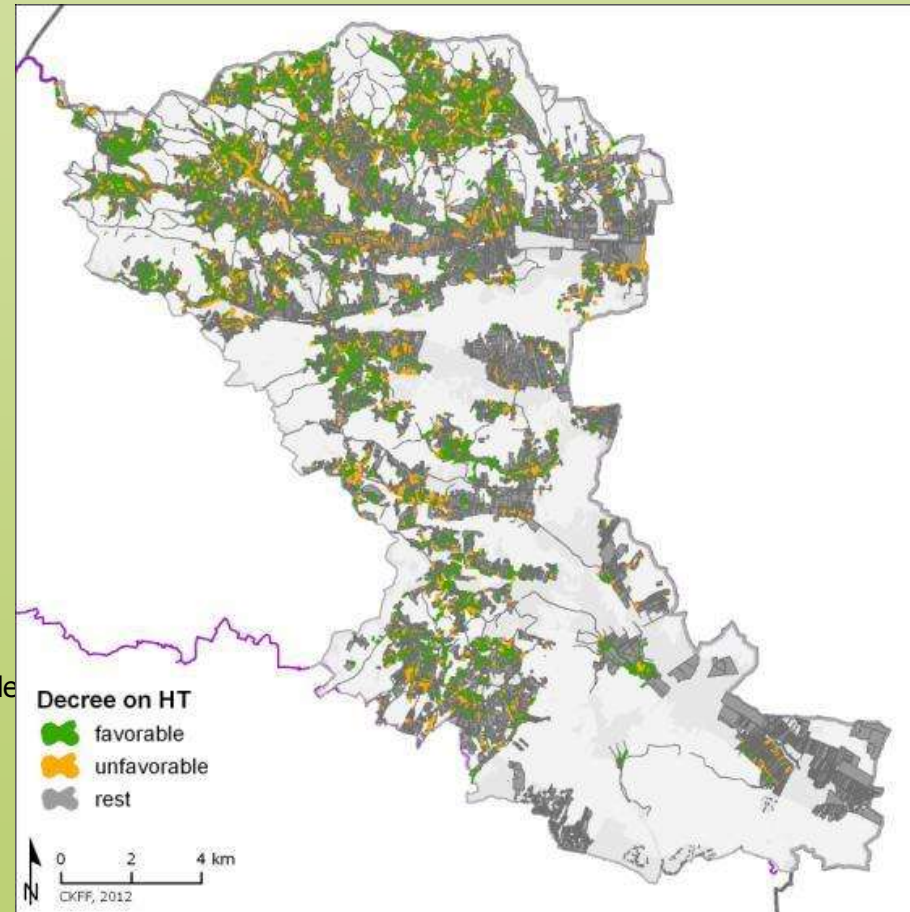
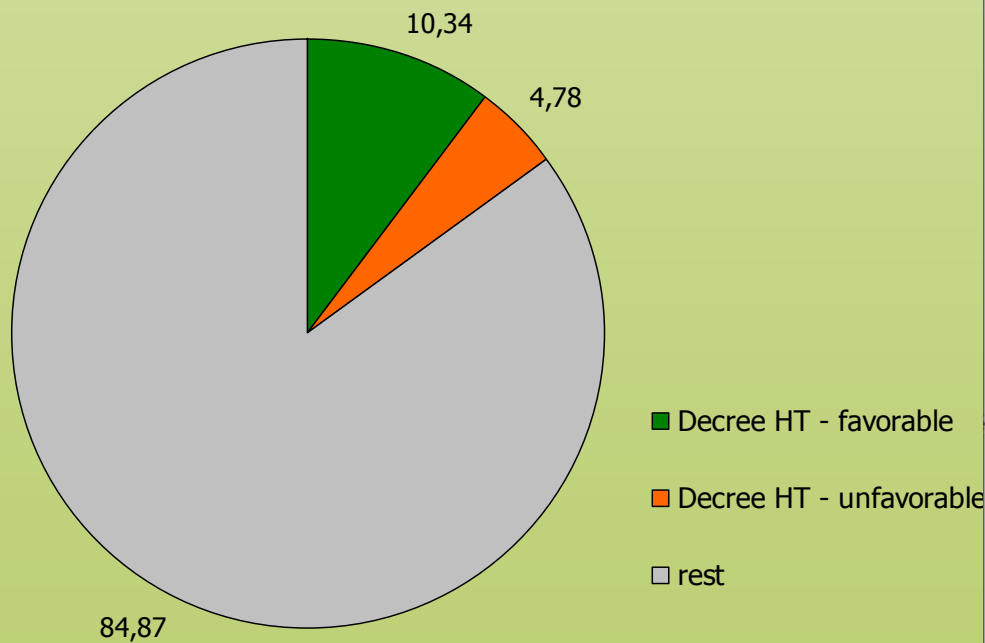
Results

- 257,5 km²
- 1/2 of area covered with forest
- average surface area of a polygon: 2.280 m² (0,22 ha)
- 68 % of non-forest area analyzed:
 - 54 % Field crops
 - 5 % Xeromesophile medio-European lowland hay meadows
 - 4 % Dry improved grasslands
 - 4 % Fallow fields

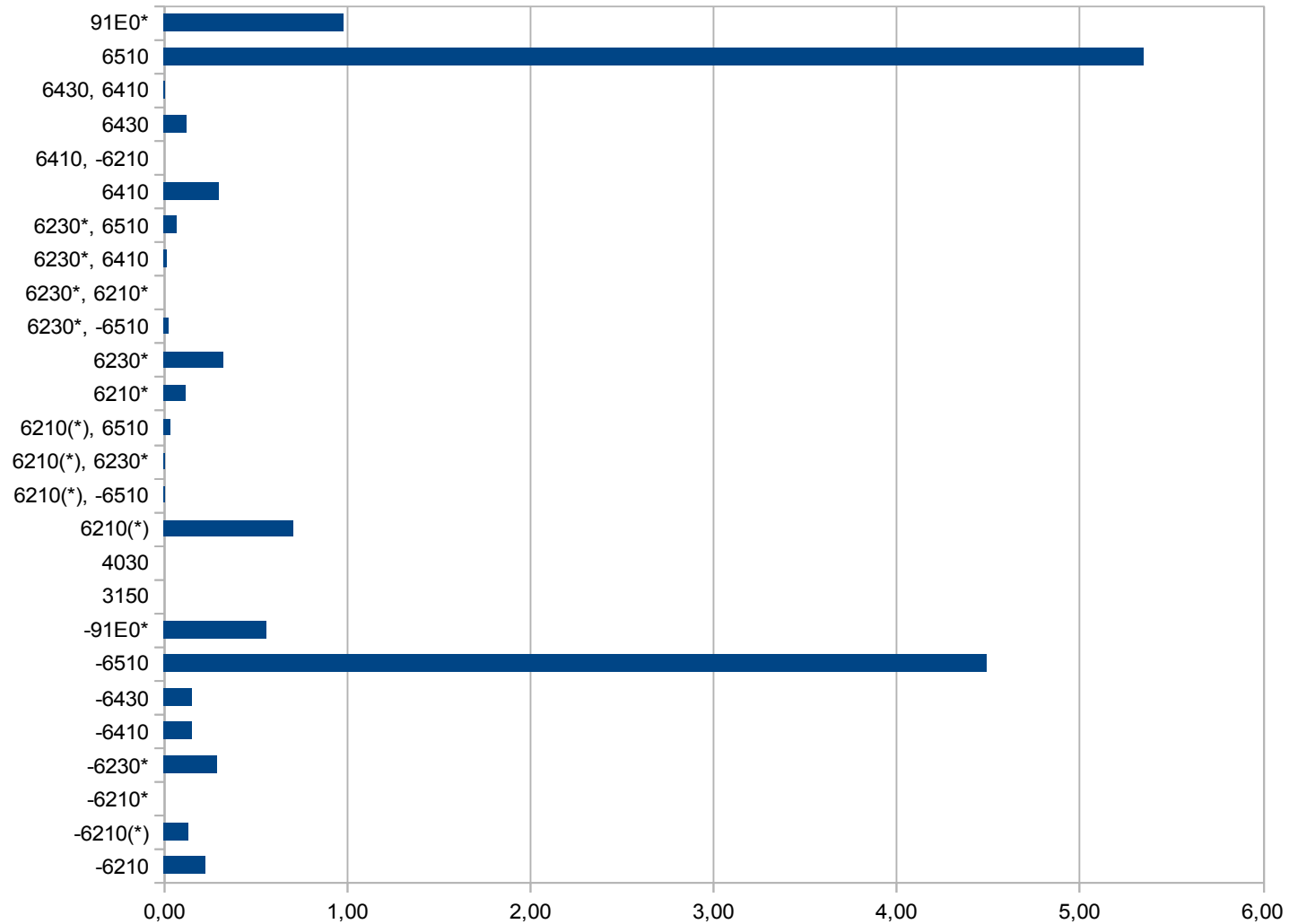


Protected habitat types

- 15 % protected by Decree on habitat types
- 1/3 with unfavorable status



State of non-forest habitat types in eastern part of Goričko in years 2010–2012



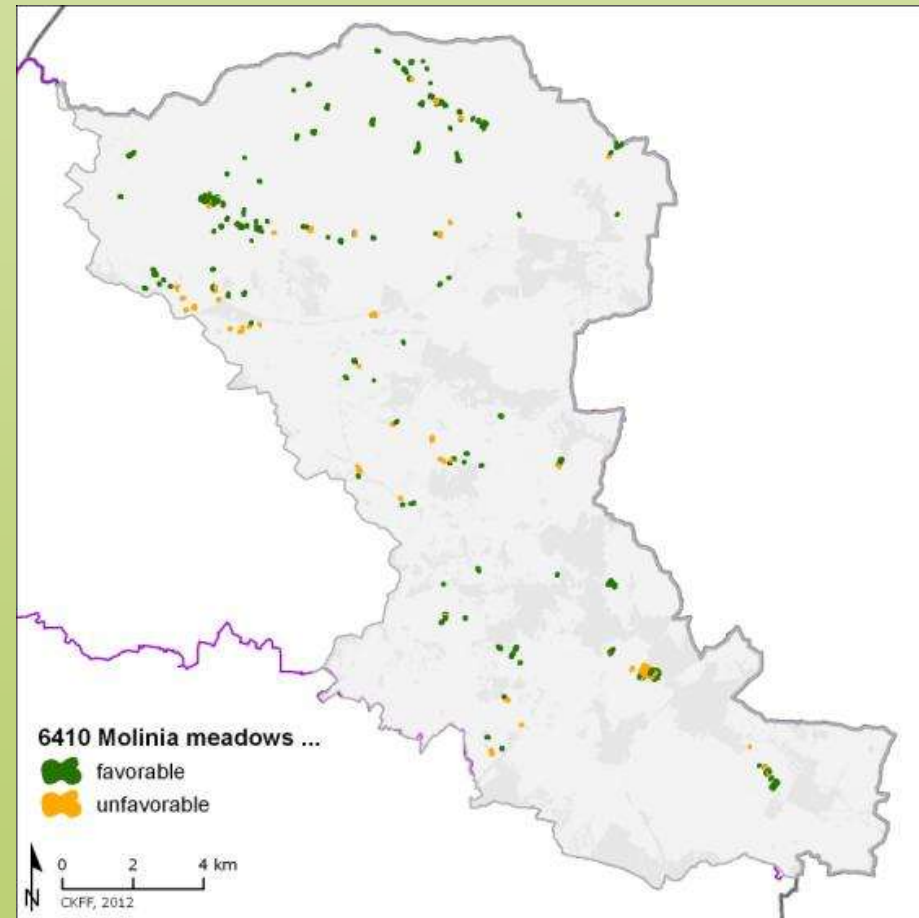
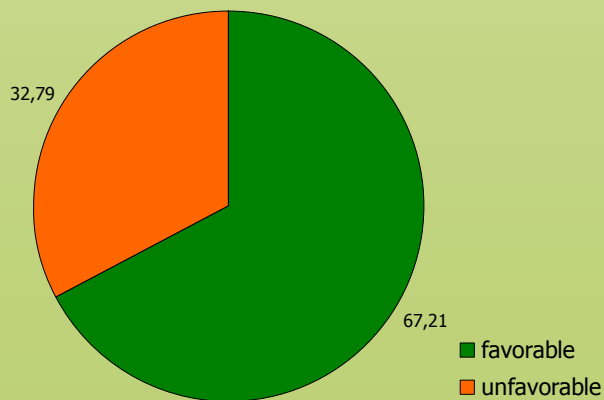
Habitat directive

- 6510 Lowland hay meadows (*Alopecurus pratensis*, *Sanguisorba officinalis*)



Habitat directive

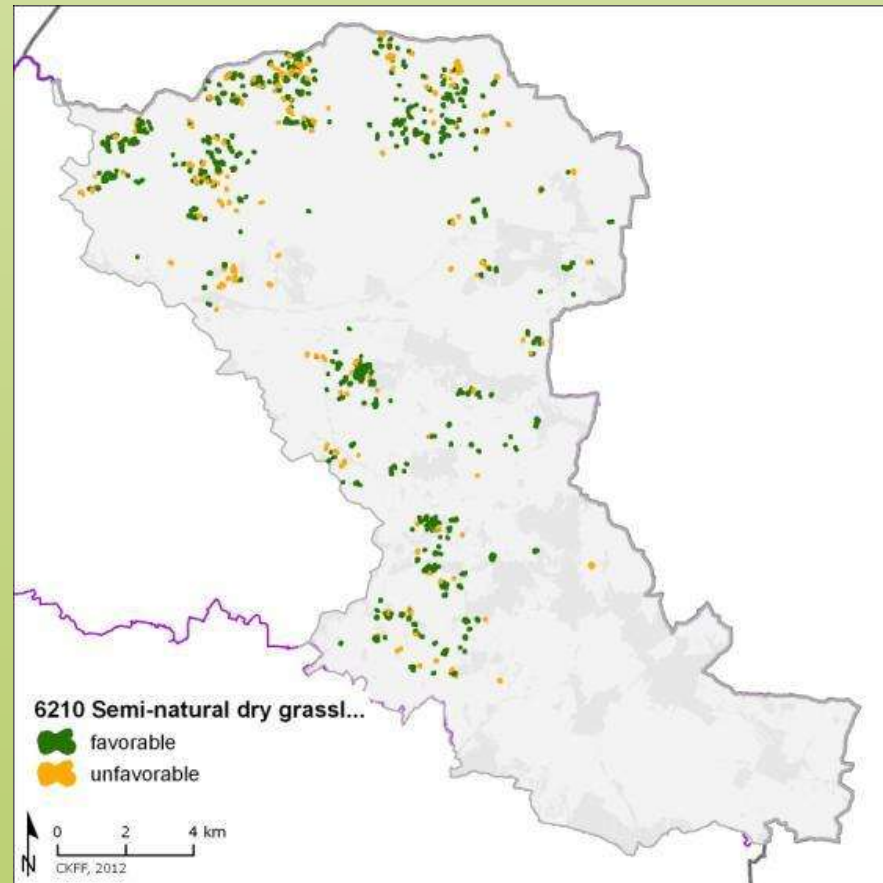
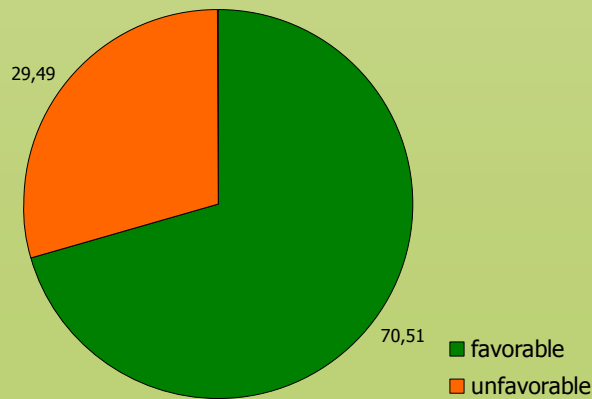
- 6410 Molinia meadows on calcareous, peaty or clayey-silt-laden soils (Molinion caeruleae)
 - 0,47 % of non-forest area
 - 1/3 with unfavorable status





Habitat directive

- 6210(*) Semi-natural dry grasslands and scrubland facies: on calcareous substrates (Festuco-Brometalia)
 - 1,32 % of non-forest area
 - ca. 30 % with unfavorable status





State of non-forest habitat types in eastern part of Goričko in years 2010–2012

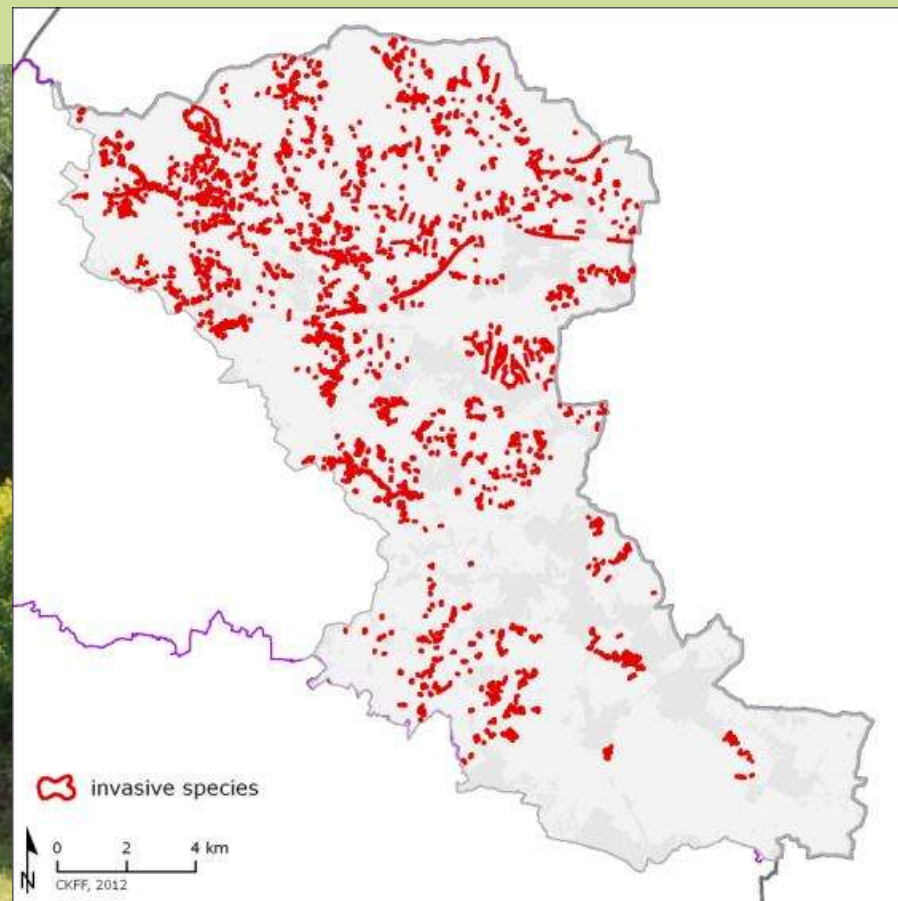






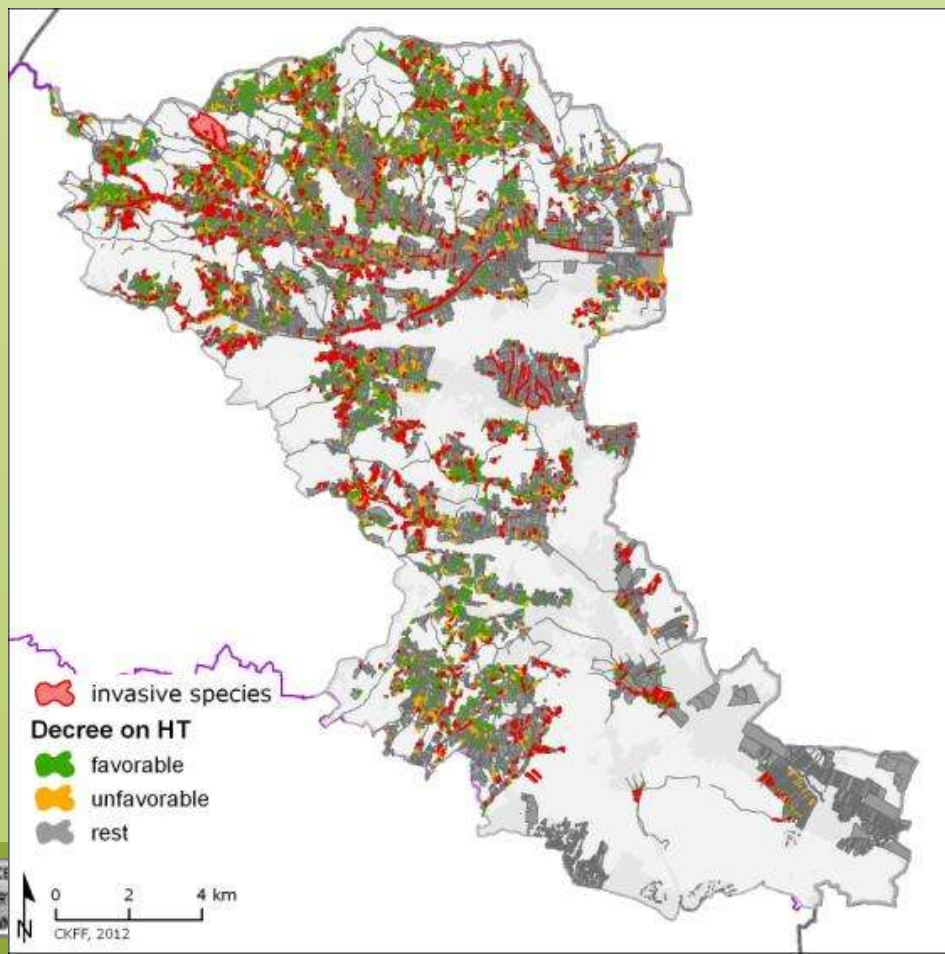
Invasive species

- *Solidago gigantea*, *Solidago canadensis*
- 4,13 % of non-forest area



Invasive species

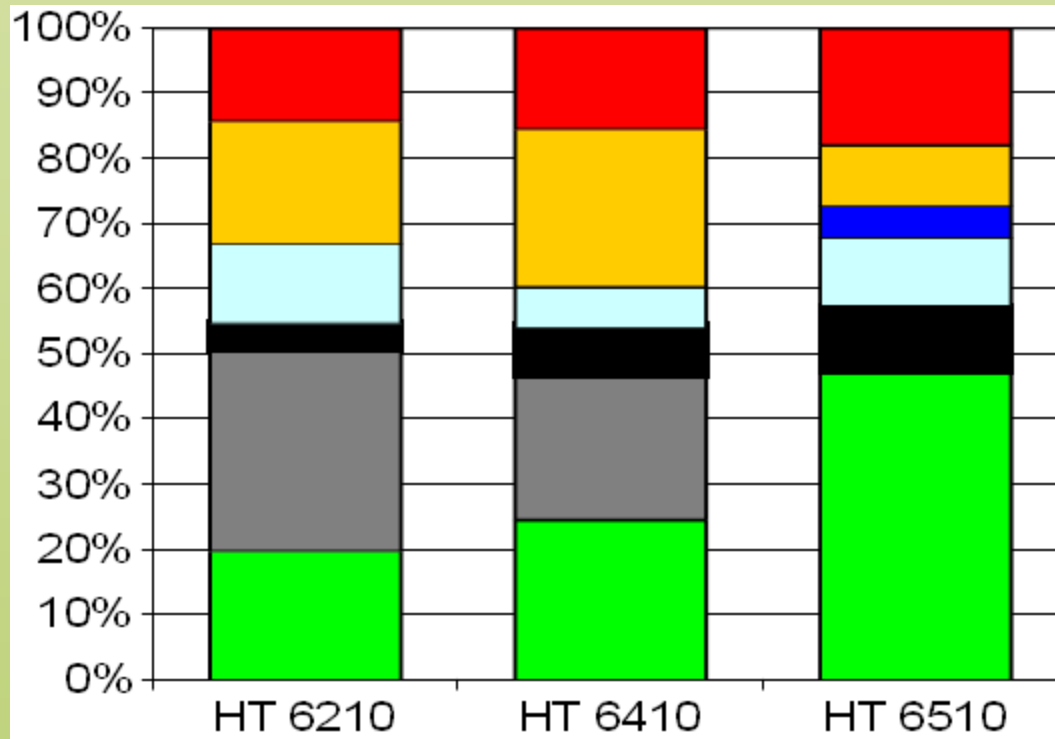
- *Solidago gigantea*, *Solidago canadensis*
- 4,13 % of non-forest area



Negative factors:

- Abandonment, overgrowing
- Intensification of agriculture, disappearing of valuable habitat types

Changes of meadows in 9 years



Conclusions:

- What do we want? Preserved nature? Agriculture? Both?
- We need both.
- Let's start with regular mowing...



Pozdrav z Goričkoga

